



Greenhouse Close

Buckingham Fields, Northampton

oriordanbond
SALES & LETTINGS



Greenhouse Close

Buckingham Fields

NN4 8UB

PRICE £198,000

This two bedroom end terraced property built by Messrs Watermeadow Homes, offered to the market under the 'Discount Market Sale' scheme, is situated in this sought after location close to Delapre Park. The development is conveniently located approximately 1.5 miles south of the town centre with a wide range of amenities close at hand including Tesco Mereway Shopping Centre and excellent schools including the highly rated Wootton Park School.

The accommodation comprises entrance hall, entrance hall, cloakroom/WC, modern fitted kitchen and living room with French doors opening onto the garden. The first floor landing leads to two double bedrooms and a three-piece bathroom suite. Outside, to the front is off road parking for two cars. To the rear is an enclosed garden with patio area and remainder laid to lawn. Further benefits include uPVC double glazing and gas central heating. (B/670/M)

AGENTS NOTE - The Discount Market Sale Scheme (DMS) offers an incredible opportunity for prospective homebuyers to own a brand new home at a reduced price. Discover stunning homes by Messrs Watermeadow Homes today and eligible buyers will benefit from 20% off the market value price (20% discount already applied to marketing price.) The DMS scheme offers access to quality homes while empowering buyers with 100% ownership and financial savings, making the dream of owning a new home more feasible and affordable.

Additional information

- Council Tax Band: B
- Energy Efficiency Rating: B

Viewing

Viewing strictly by appointment – details below

Disclaimer

O'Riordan Bond Estate Agents Limited has not tested apparatus, equipment, fittings or services and so cannot verify they are in working order. The buyer is advised to obtain verification from their solicitor or surveyor.

O'Riordan Bond Far Cotton Sales

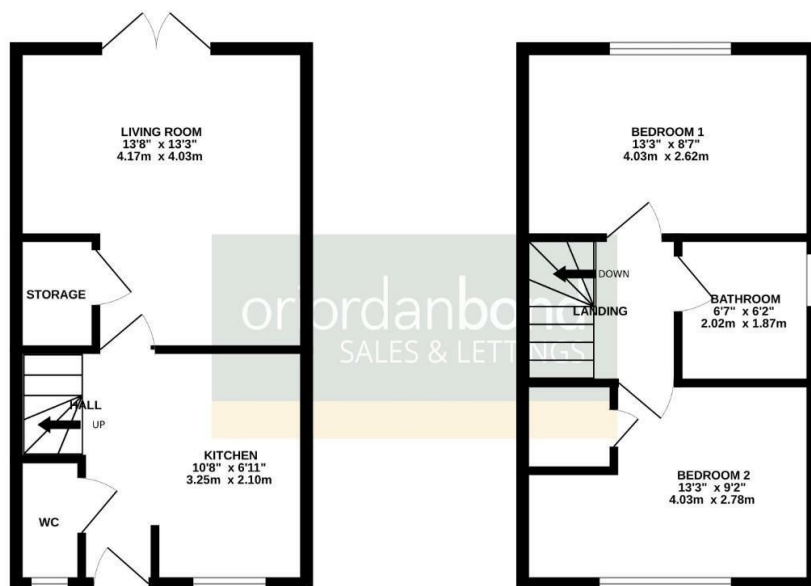
01604 706007

farcotton@oriordanbond.co.uk



GROUND FLOOR
335 sq.ft. (31.1 sq.m.) approx.

1ST FLOOR
335 sq.ft. (31.1 sq.m.) approx.



TOTAL FLOOR AREA : 670 sq.ft. (62.2 sq.m.) approx.

Whilst every attempt has been made to ensure the accuracy of the floorplan contained here, measurements of doors, windows, rooms and any other items are approximate and no responsibility is taken for any error, omission or mis-statement. This plan is for illustrative purposes only and should be used as such by any prospective purchaser. The services, systems and appliances shown have not been tested and no guarantee as to their operability or efficiency can be given.
Made with Metropix 02/2025